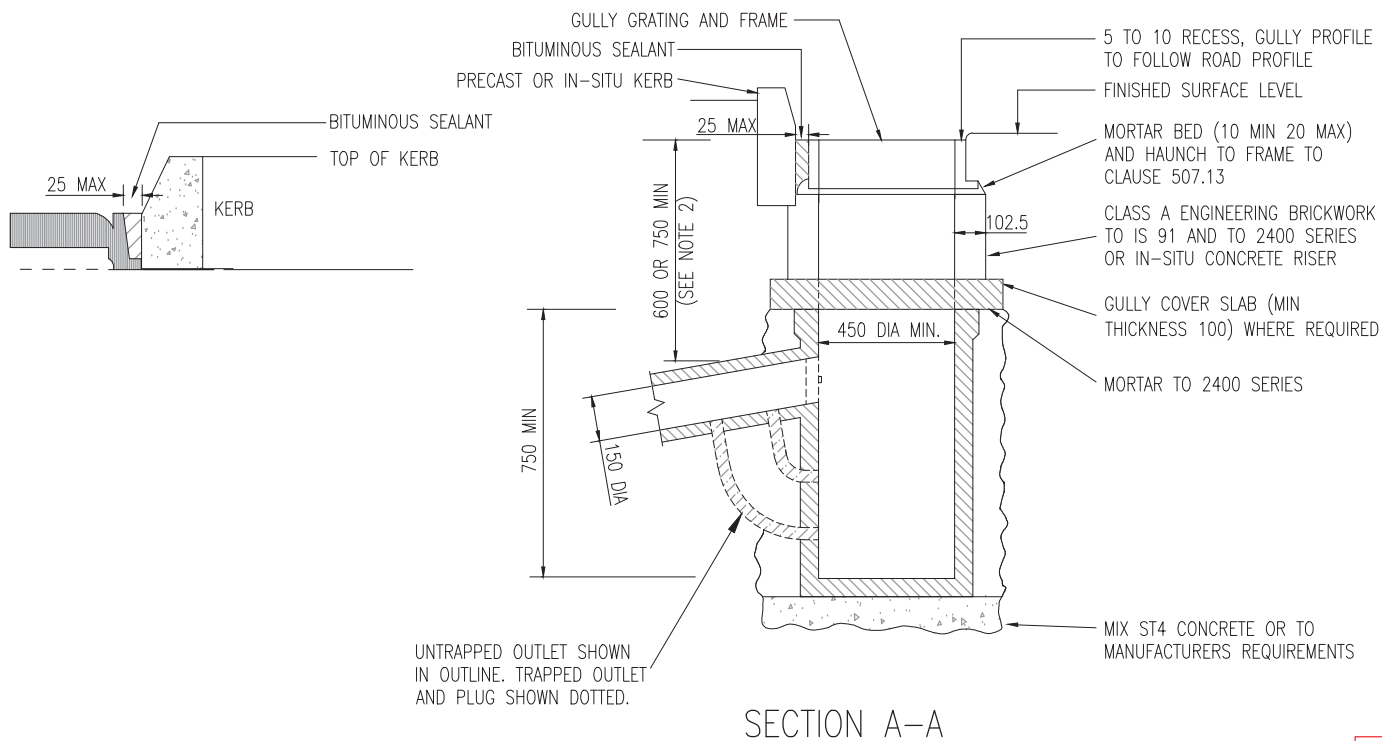


GULLY COVER SLAB

NOTES:

1. ALL DIMENSIONS ARE IN MILLIMETRES.
2. THE MINIMUM DEPTH FROM THE TOP OF THE GRATING TO THE TOP OF THE GULLY OUTLET IS TO BE 750 WHEN THE CONNECTING PIPE IS UNDER A CARRIAGEWAY OR A HARD SHOULDER AND 600 ELSEWHERE.
3. PRECAST CONCRETE GULLIES AND COVER SLABS SHALL BE TO IS EN 1917 OR BS 5911- 6.
4. FOR DETAILS OF TYPICAL GULLY GRATING SEE DRAWING No RCD/500/12.
5. WHERE A GULLY HAS A TRAP THE STOPPERS SHALL COMPLY WITH THE REQUIREMENTS OF BS 5911-4 AND IS EN 1917.
6. FOR DETAILS OF GULLY GRATINGS REFER TO APPENDIX 5/1.
7. SEE RCD/500/11 FOR IN-SITU CONCRETE AND BLOCKWORK GULLIES.



NOT TO SCALE

TII PUBLICATION NUMBER: CC-SCD-00510