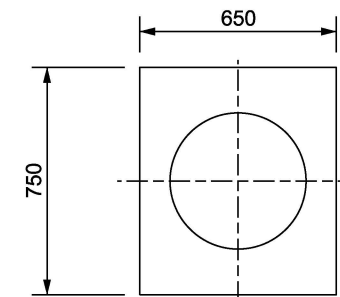
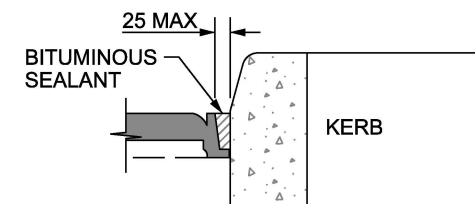


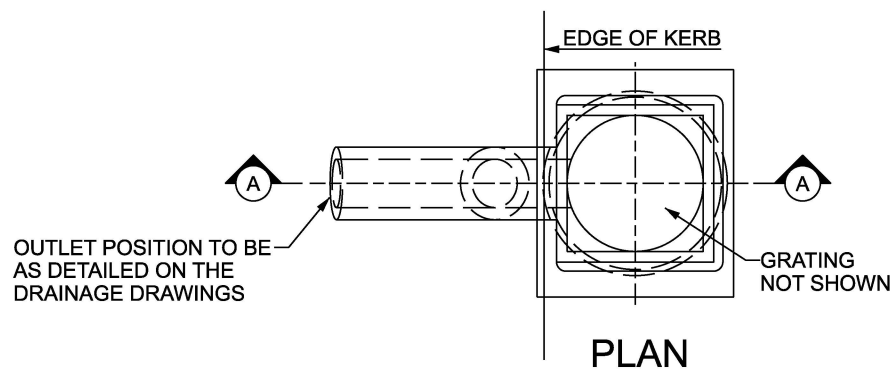
SECTION A-A



GULLY COVER SLAB



KERB DETAIL



NOT TO SCALE

NOTES :

1. ALL DIMENSIONS ARE IN MILLIMETRES.
2. THE MINIMUM DEPTH FROM THE TOP OF THE GRATING TO THE TOP OF THE GULLY OUTLET IS TO BE 750mm WHEN THE CONNECTING PIPE IS UNDER A CARRIAGEWAY, HARD SHOULDER OR HARD STRIP AND 600mm ELSEWHERE.
3. PRECAST CONCRETE GULLIES AND COVER SLABS SHALL BE TO IS EN 1917 OR BS 5911-6.
4. FOR DETAILS OF TYPICAL GULLY GRATING SEE CC-SCD-00512.
5. WHERE A GULLY HAS A TRAP THE STOPPERS SHALL COMPLY WITH THE REQUIREMENTS OF BS 5911-4 AND IS EN 1917.
6. FOR DETAILS OF GULLY GRATINGS REFER TO APPENDIX 5/1.
7. SEE CC-SCD-00511 FOR IN-SITU CONCRETE AND BLOCKWORK GULLIES.