



Bonneagar Iompair Éireann
Transport Infrastructure Ireland

TII Publications



CAD Standard for National Roads

GE-BIM-00102

June 2026

About TII

Transport Infrastructure Ireland (TII) is responsible for managing and improving the country's national road and light rail networks.

About TII Publications

TII maintains an online suite of technical publications, which is managed through the TII Publications website. The contents of TII Publications is clearly split into 'Standards' and 'Technical' documentation. All documentation for implementation on TII schemes is collectively referred to as TII Publications (Standards), and all other documentation within the system is collectively referred to as TII Publications (Technical).

Document Attributes

Each document within TII Publications has a range of attributes associated with it, which allows for efficient access and retrieval of the document from the website. These attributes are also contained on the inside cover of each current document, for reference.

TII Publication Title	<i>CAD Standard for National Roads</i>
TII Publication Number	<i>GE-BIM-00102</i>

Activity	<i>General (GE)</i>		Document Set	<i>Standards</i>
Stream	<i>Building Information Modelling (BIM)</i>		Publication Date	<i>June 2026</i>
Document Number	<i>00102</i>		Historical Reference	<i>N/A</i>

TII Publications Website

This document is part of the TII publications system all of which is available free of charge at <https://publications.tii.ie/>. For more information on the TII Publications system or to access further TII Publications documentation, please refer to the TII Publications website.

TII Authorisation and Contact Details

This document has been authorised by the Director of Professional Services, Transport Infrastructure Ireland. For any further guidance on the TII Publications system, please contact the following:

Contact: Standards and Research Section, Transport Infrastructure Ireland
 Postal Address: Parkgate Business Centre, Parkgate Street, Dublin 8, D08 DK10
 Telephone: +353 1 646 3600
 Email: infoPUBS@tii.ie

TII Publications



Activity:	General (GE)
Stream:	Building Information Modelling (BIM)
TII Publication Title:	CAD Standard for National Roads
TII Publication Number:	GE-BIM-00102
Publication Date:	June 2026
Set:	Standards

Contents

1. Introduction	1
2. Model and Drawing Files	3
3. Coordinate System.....	16
4. References.....	17
Appendix A - Acronyms and Abbreviations.....	18
Appendix B - Presentation Codes	21

Contents

1.	Introduction	1
1.1	Background.....	1
1.2	Document Purpose	1
2.	Model and Drawing Files	3
2.1	Introduction	3
2.2	Classification Naming	3
2.3	Standard Component Names.....	5
2.4	Asset Information Requirements	5
2.5	Modelling Rules and Principles	6
2.6	CAD Composition and Presentation Rules and Guidance.....	7
2.7	Survey Data	13
3.	Coordinate System.....	16
3.1	Units	16
3.2	Coordinate Systems and Projection	16
3.3	Datums	16
4.	References.....	17
	Appendix A - Acronyms and Abbreviations	18
	Appendix B - Presentation Codes	21

1. Introduction

1.1 Background

From January 2024, consultants and contractors engaged to design, construct and oversee the construction of public works contracts will have Building Information Modelling (BIM) requirements included in their scope of service, initially applying to higher-value projects and progressively extending to all contracts over €1 million by 2027.

The Office of Government Procurement (OGP), in conjunction with the Government Contracts Committee for Construction (GCCC), will coordinate the uptake of BIM across those public bodies who are required to use the Capital Works Management Framework (CWMF).

Transport Infrastructure Ireland (TII) as an Approving Authority has taken responsibility for developing CAD Standards in line with this mandate, to ensure consistency across all the projects and successful implementation of BIM.

1.2 Document Purpose

This document represents Transport Infrastructure Ireland (TII) specification for the use of Computer Aided Design (CAD) to comply with I.S. EN ISO 19650. The document defines the methods for managing the production, distribution and quality of information using CAD Systems through a disciplined process for collaboration, naming and modelling practice.

Requirements of the CAD standards for National Roads projects are derived and adopted from Design Manual for Roads and Bridges GG184 Specification for the use of Computer Aided Design.

The document shall be read in conjunction with the GE-BIM-00101 – BIM for Infrastructure Implementation Guidelines for National Roads and other relevant documents as shown in Figure 1.1.

For the full list of applicable documents refer to GE-BIM-00101 – BIM for Infrastructure Implementation Guidelines for National Roads Section 1.3.

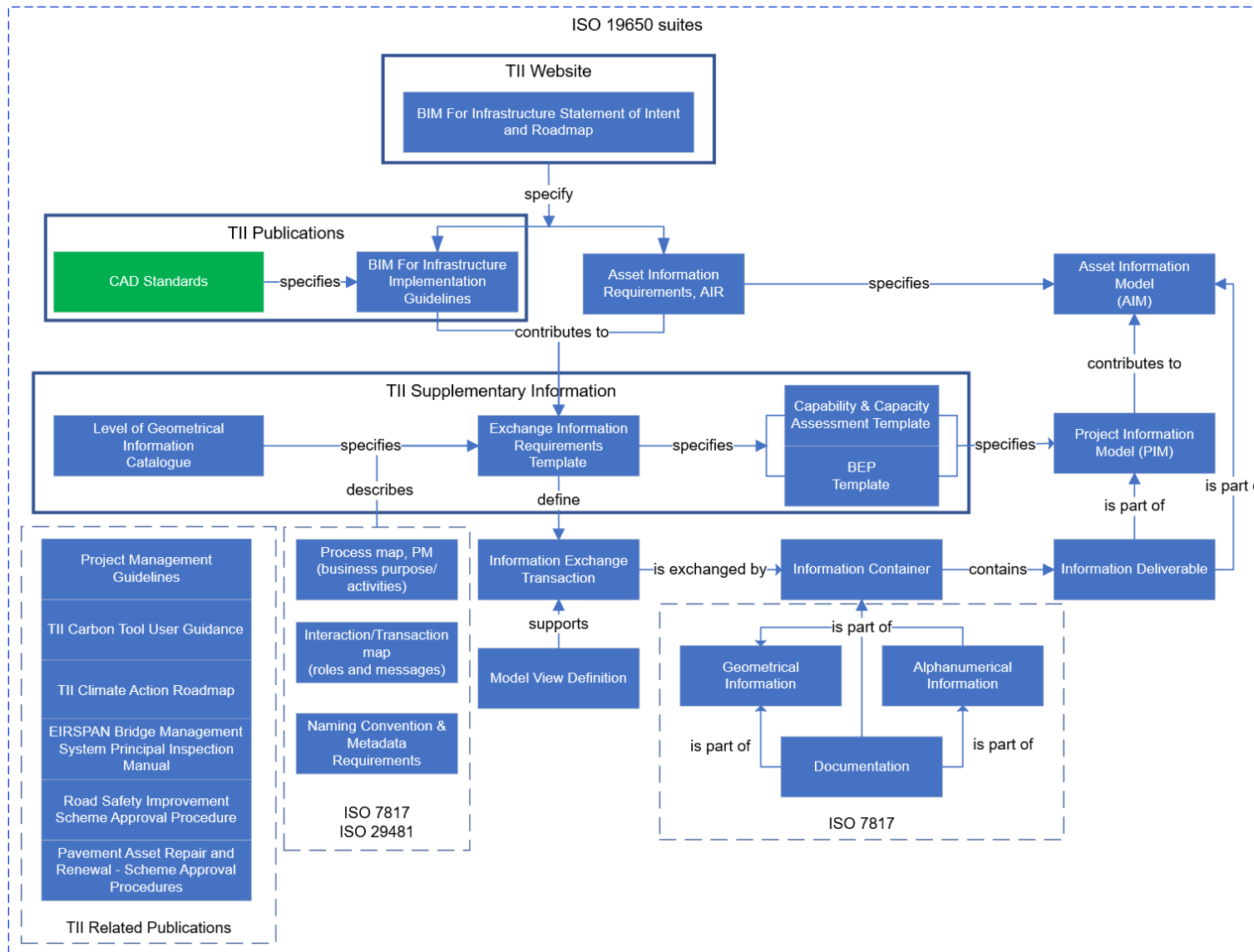


Figure 1.1 – Standards Relationship

2. Model and Drawing Files

2.1 Introduction

Information Container & metadata shall comply with information container guidelines outlined in GE-BIM-00101 - BIM for Infrastructure Implementation Guidelines for National Roads.

CAD models and drawing files shall, where appropriate, be 3D, with embedded, associated, or linked data, and be capable of interrogation and analysis by digital processes.

CAD models and drawing files are no longer intended purely for interpretation by the human eye. Working to this document ensures that information can be generated consistently, effectively, and efficiently from CAD models.

Design management systems shall include the following key elements to enable generation of accurate asset-related data that can be validated and verified:

1. Named containers (file names)
2. Classification (layer names)
3. Unique identification (UID)
4. Standard component names
5. Adherence to modelling rules and principles
6. Adherence to CAD composition and presentation rules and guidance

2.2 Classification Naming

Layers within CAD files shall use the naming convention embedded in their properties and given in Section 5, Section 6 and Section 7.7 of the ISO 13567-2.

Note: The term "layer" here indicates generic grouping functionality in the chosen CAD system.

Layers shall contain the embedded information in accordance with Figure 2.1.



Figure 2.1 – Layer Convention

The terms and translations given in Table 2.1 should be used.

Table 2.1 - Terms used in ISO 13567

Term Used	Term used in ISO13567
Role	Agent (see sub-clause 6.1)
Classification	Element (see sub-clause 6.2)
Presentation	Presentation (see sub-clause 6.3)

Term Used	Term used in ISO13567
Description	User Defined (see sub-clause 7.7)

2.2.1 Role

The role field shall be taken from the section 6.1.6 of the GE-BIM-00101 BIM for Infrastructure Implementation Guidelines for National Roads.

2.2.2 Classification

The classification field shall be based on the Uniclass 2015 classification system from the National Building Specification (NBS).

Uniclass 2015 is a dynamic classification, and users should be aware of the changing nature of the system.

For option/feasibility stages, the classification field should be taken from the tables Entities (En), Elements / Functions (EF) or Spaces / Locations (SL).

For development, detailed design and construction stages, the classification field should be taken from the tables Systems (Ss), Products (Pr) or Construction Aids (CA).

The table for CAD (Zz) in the NBS should be used to select the classification field for all drawing-related matters at all project stages.

Although, Uniclass permits underscores, ISO 13567-2 sub-clause 6.2 stipulates a maximum of six alphanumeric characters, and the underscore and hyphens are used for other purposes. For purposes of this specification, therefore, underscores are not used within the classification field.

2.2.3 Presentation

The presentation field shall be selected from I.S. EN ISO 13567 and summarised in Appendix B.

2.2.4 Description

The description field shall give a clear and concise explanation of the Uniclass 2015 using CamelCase.

Maintain consistent descriptive text through discipline-specific template and seed files.

Examples:

- D-Co3265-M-NaturalAreas
- CH-EF3060-P-Pavements

The full text descriptions from the NBS table are often unsuitable, as these can be long and can contain punctuation characters.

Where it is necessary to distinguish between different types or configurations of items or assets that fall under the same classification code, an additional options field shall be appended to the description.

Where options are appended to the description, they shall be in the form of Figure 2.2.



Figure 2.2 – Options appended to description

Where an 'OptionName' is given with no 'OptionValue', that value should default to Boolean TRUE.

Options can be interpreted by software to turn polylines into schedules, quantities, 3D models etc. The list of use cases is not exhaustive and other use cases of option field may be used and proposed by the Project Team subject to the agreement of Project Manager. The approach shall be clearly defined within the BIM Execution Plan (BEP).

2.3 Standard Component Names

Components designed for multiple use such as blocks, cells, within or across multiple projects, shall be named in accordance with ISO 22014 as defined below.

The names of components within models shall adopt the convention of Figure 2.3.

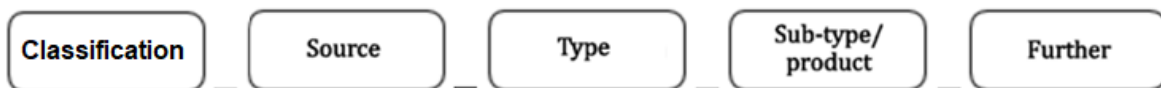


Figure 2.3 – Component Names

The component name shall use the underscore character between fields.

The classification field shall be based on Uniclass 2015.

Although, Uniclass permits underscores, ISO 13567-2 sub-clause 6.2 stipulates a maximum of six alphanumeric characters, and the underscore and hyphens are used for other purposes. For purposes of this specification, therefore, underscores are not used within the classification field.

The source field shall be the originator field as defined in the GE-BIM-00101 – BIM for Infrastructure Implementation Guidelines for National Roads.

The type field shall be a short CamelCase description.

The subtype field shall be a unique 4-digit number.

The further field is optional and can represent selected fixed property such as size, material or behaviour.

2.4 Asset Information Requirements

The CAD models and drawing files shall contain, or be linked to databases that hold, the properties of the assets as required by TII. Where the CAD model is linked to external database, the approach for linking graphical models and drawings with the TII Asset database shall be based on the principle of establishing a persistent and unique identifier (UID) for each asset. This UID must be embedded within the object properties of the CAD model or drawing element. The UID acts as a relational key, enabling bi-directional linkage between the geometric representation and the associated asset record.

To ensure interoperability and future maintainability, asset UIDs must be:

- Globally unique within the project scope
- Persistently assigned to the asset throughout its lifecycle
- Compatible with the schema used in the TII Asset Database

Each file shall contain only one asset class.

A single asset class for a project may be spread across multiple files, provided that there is no duplication.

2.5 Modelling Rules and Principles

Interoperability issues should be resolved at project outset to ensure consistent appearance of CAD elements (e.g. line type/styles, text, dimensions, hatching, etc.) when translating between software packages.

The following guidelines should be adopted:

- Use the native line styles and line types where possible
- When editing drawing, use the line types that import with the drawing

Note that when drawing is translated from one software vendor to another content could be lost.

Where both 3D and 2D representations are required, the 2D representation should be derived automatically from the 3D representation wherever practicable.

Point assets shall be represented by dimensionally correct 3D components.

Point assets may be represented by 2D symbols where the true size of the component can be overlooked on the finished drawing.

The insertion point and axes of such components and symbols shall be meaningful and logical in the context of that object's purpose on the project.

Construction, reference or spine lines for each continuous asset shall be created and supplied, either as geographic vector file formats, or as 3D polylines / linestrings on layers that comply with the requirements of this document. Note: The creation of construction, reference or spine lines for each continuous asset can support exchange to survey equipment for setting out.

Linear assets, including safety barrier beams, rails and posts, shall be modelled as 3D components that maintain spatial integrity and geometric accuracy.

Linear assets may be represented by 2D line styles where the true size of the component can be confusing in a plan view at larger scales.

Where the approach uses line styles to depict assets such as utilities, their exclusion zones should also be depicted.

The "spine" line of any extrusion should be in a meaningful and logical position on the cross section.

The position of the spine should be clearly marked on an accompanying file / drawing.

It is acceptable to model thin components as extruded profiles.

CAD entities that bound or enclose 3D space are preferred to wire-line representations. Entities such as solids and "watertight" (topologically closed) meshes have intrinsic properties of volume. These, along with other meshes, surfaces and faces, have surface area. Some extruded shapes can have readily found length and cross-sectional area. Adopting these kinds of entities for the components of the design can facilitate time and cost modelling.

2.6 CAD Composition and Presentation Rules and Guidance

Drawing rendition files shall compose the necessary reference files, frames and notes to achieve the required contractual deliverable.

Drawing rendition files should not contain more than one drawing (i.e., multiple tabs are not permitted), so that management and version control are not compromised.

Drawing sheet files should not be attached as reference files, except where the capabilities of the CAD system make this unavoidable, for example vertical profiles, developed elevations etc.

Model files shall not retain references to other model drawings used during development when shared or used by drawing renditions, except where the capabilities of the CAD system make this unavoidable, for example .mms files in AutoCAD Civil 3D or equivalent.

For convenience, otherwise empty arrangement drawings may be saved with assemblies of reference files such as survey tiles. The otherwise empty arrangement drawings can thus be attached in a single command.

Drawing rendition files shall attach model files (3D and 2D) on dedicated layers, one for unclipped content and one for each clip boundary such as cut lines.

Model files (3D and 2D) shall be attached in model space.

The model composition data flow example is outlined in Figure 2.4.

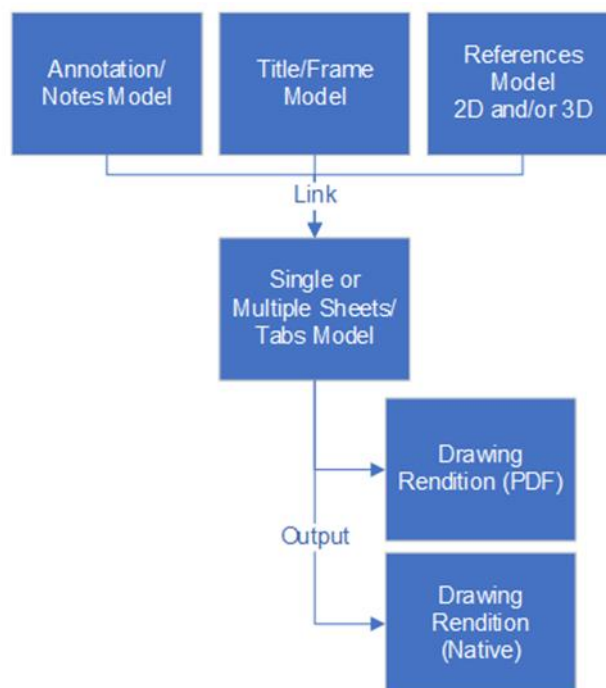


Figure 2.4 – Model Composition Data Flow Example

2.6.1 Drawing Frame and Title Blocks

Drawing frames, title and revision blocks etc. shall be attached in paper space.

The title block shall contain the minimum information as shown in Table 2.2.

Table 2.2 – Title Block Content

Metadata	Description
Client	Name of Appointing Party
Number	Container reference number in accordance with the GE-BIM-00101 – BIM for Infrastructure Implementation Guidelines for National Roads.
Title	A simple short title for the container
Status	Status code in accordance with the GE-BIM-00101 – BIM for Infrastructure Implementation Guidelines for National Roads.
State	A state code shall be given, either "Preliminary" or "Construction".
Revision	Revision code in accordance with the GE-BIM-00101 – BIM for Infrastructure Implementation Guidelines for National Roads.
Project title	Appointing party given title for the project
Originator / supplier project reference number	Appointed party project reference number
Originator / supplier details	Appointed party details
Scale	Section 2.6.2 of this document
Original Size	Paper size of the drawing rendition (A0, A1 etc)
Date of issue	Date the drawing was issued
Project Stage	In accordance with the PE-PMG-02041- Project management Guidelines.

Lead Appointed Party shall provide drawing and model template for Appointing party acceptance.

2.6.2 Scale

Plans, details, sections and elevations shall clearly indicate the scale to which they are drawn.

The scale field within the title block shall be populated to show the scale of drawn elements.

Scale bars should be included to assist stakeholders.

Scales should be selected from those in Table 2.3.

Table 2.3 – Permitted drawing scale

1:1	1:10	1:100	1:1,000	1:10,000	1:100,000
-	-	1:125	1:1,250	1:12,500	1:125,000
1:2	1:20	1:200	1:2,000	1:20,000	1:200,000
-	1:25	1:250	1:2,500	1:25,000	1:250,000
1:5	1:50	1:500	1:5,000	1:50,000	1:500,000

Where historic maps are required for illustrating a historical context, they should not be used on drawings of proposed works.

The number of scales used on a drawing should be kept to a minimum.

On multi-disciplinary projects, wherever practical the adopted scale should be the same for similar areas covered across all disciplines.

Where a scale is not relevant to the drawing sheet, the scale texts in Table 2.4 shall be used.

Table 2.4 – Permitted scale texts if not relevant to drawing

Scale Text	Usage
As shown	Multiple scale drawings (show scale with the detail title), non- standard scales.
NTS	Not to scale. Schematic views etc.
N/A	Not applicable. Standard notes drawing, schedules etc.

Models shall be drawn at 1:1 scale.

Changes between revisions of models and drawings should be indicated through a reference accompanied by clouding and listed and described on the title blocks revision section.

As-built drawings shall contain no clouding.

2.6.3 Text

- Arial font shall be used for all annotation
- The text sizes indicated in Table 2.5 should be adopted

Table 2.5 – Text sizes

Plotted height (mm) (at full size)	Purpose
1.8	A4 & A3 sketches
2.5	General annotation, labels, and dimensions
3.5	More prominent notes, labels, dimensions, and minor headings
5.0	Headings, titles, and grid text
7.0	Larger headings

- The text width factor should be 1
- Line spacing for interoperability should be:
 1. AutoCAD = 1.0x (default)
 2. MicroStation = 0.667
- Justification should be left centre
- The text case adopted should be used consistently across a project
- Abbreviations for SI units should be presented using the appropriate case
- UPPER CASE is preferred and should be used for all annotation, titles, and labels however sentence case is permitted
- Text should not obscure content
- Text should be legible when printed at reduced size (e.g. A1 to A3)

2.6.4 Dimensions and Leaders

- Filled 2.5mm arrow heads should be used
- Text justification should be above and centred (default)
- Dimension line weight should be set to 0.18mm
- Dimension text height should be consistent with general text height
- Dimensions shall be created using the software application dimensioning tools
- Dimension styles and text heights shall be consistent across a set of drawings
- Dimensions shall be legible when printed at reduced size (e.g. A1 to A3)
- Dimensions shall be associative without dimension overrides
- Dimensions shall be annotative or annotation scale
- Dimensions shall reside on one or more dedicated layers
- Multi-leaders shall be used
- All text shall be left justified
- Landing should be set to the middle of the top line
- Filled 2.5 mm arrow heads shall be used for point accuracy
- Filled dot 2.5 mm shall be used to indicate areas

2.6.5 Line Types

- Line types shall be defined by layer.
- Standard line types and styles provided by the CAD system should be used
- Where these are not suitable, additional custom line types can be defined. This must be approved by Appointing party and shared with Project Team
- Element line type designation shall be determined at project outset, documented in the BIM Execution Plan and used consistently across a project
- Examples of the line types, styles and settings are summarised in Table 2.6 – Table 2.9.

Table 2.6 – AutoCAD line types

Type (ACADISO.lin Line)	Description
Continuous	Continuous
Dot	Dot2
Hidden	Hidden2
Dashed	Dashed2
Dashdot	Dashdot2
Divide	Divide2
Center	Center2
Border	Border2
Phantom	Phantom2

Table 2.7 – MicroStation Line Styles

Line Style (Istyle.rsc)	Description
0	Continuous
1	Dot
2	Medium dash
3	Long dash
4	Dot, dash
5	Short dash
6	Dash, dot, dot
7	Long dash, short dash

Table 2.8 – AutoCAD Line Type Settings

	LTSCALE	PSLTSCALE
Element	1	
Model Space	Finished drawing scale e.g. 500	n/a
Paper Space	1	1

Table 2.9 – MicroStation Custom Line Style Settings

Global line style scale	Finished drawing scale e.g. 500
Reference: global line style scale	Master
References: scale line styles by reference scale	On

2.6.6 Line Weights and Colours

- Plotted line widths shall be 0.05mm; 0.13mm; 0.18mm; 0.25mm; 0.35mm; 0.5mm; 0.7mm; 1.0mm; 1.4mm; or 2.0mm
- Line weights should be set by layer rather than by element
- Pen widths shall be set by object line weight, not by pen table
- Colours 0 to 9 inclusive should plot as black lines
- Colours other than 0 to 9 should plot in monochrome or their drawn colour according to the chosen plot settings

2.6.7 Hatching and Shading

Hatching and shading should be kept to the minimum necessary to define areas and types clearly.

Only patches of the material hatch pattern sufficient to clearly show the intent of the hatching should be shown. Using patches of the material hatch pattern can keep CAD file sizes down.

Default patterns should be used where possible.

Custom hatch patterns may be used where necessary.

Hatching shall be consistent across a project for the same element designation.

Hatching/patterning shall be created using the relevant tools available within the software.

Draw order and transparency settings of filled regions shall not cover required graphical information.

All hatching shall be associative and annotative.

All hatching shall reside on dedicated layers to allow easy control of visibility.

All hatching shall reside in model space / design view.

Each hatched area shall be defined as a single hatched entity and not grouped with other hatched areas.

For large regions of hatching and zoning, a separate model drawing shall be created to aid drawing update order and speed of display (e.g. landscaping, zoning and staging drawings).

2.6.8 Revision Clouding

Changes should be highlighted by clouding with revision triangle, subsequent changes should have previous cloud removed, greyed out historic revision triangles to be retained relevant to contract stage.

All revision clouds and triangles should be removed on commencement of subsequent contract stage.

2.6.9 Background Mapping and Copyright

Where background mapping data products are used (Tailte Éireann Surveying or otherwise) in drawings, the appropriate copyright acknowledgements shall be included.

2.7 Survey Data

Survey specifications (including standards, grid or mapping, areas, routes, hazards, landowners affected, survey procedures, instrumentation, monitoring, accuracy requirements, post-processing requirements etc.) shall be defined in the survey requirements.

2.7.1 Topographic Survey Data

Topographic surveys shall be delivered as 3D CAD model files in accordance with the provisions of this document.

Unless otherwise specified or agreed with the Appointing Party, symbols and annotation in topographic survey drawings shall be suitable for presentation at 1:500 scale.

Where the objects surveyed extend up or down from ground level, separate layers shall be provided for the ground level lines and the other vertical extent. For example, the tops of walls, fences, ditches will be in separate layers from their bases.

Features at ground level shall not cross except at a common point.

Features at ground level shall not be continuous across bridge decks.

Features at ground level shall stop and restart at the ends of the bridge deck.

Features that represent closed boundaries shall be geometrically closed.

Property information relating to point assets (spot levels, references etc.) shall be provided as linked attributes, not as unrelated text. Within AutoCAD the association is achieved through attributed blocks, and within Bentley MicroStation through Tags or Item Types.

2.7.2 Earth Observation and Aerial Surveys

Alternative aerial survey techniques can be used to capture, store and process ground topography.

The techniques employed include aerial photography, light detection and ranging (LiDAR), and hyperspectral, multispectral, thermal and synthetic aperture radar (SAR) imaging systems. (RICS, 2021)

Where specified within the survey requirements or directed by the Appointing Party, the Lead Appointing Party shall provide the minimum information detailed in Table 2.10 for approval by the Appointing Party.

Table 2.10 – Earth Observation and Aerial Surveys Information Requirements (RICS, 2021)

Type	Description
Use cases and Data Type	<p>Aerial photography remains the most used data type in aerial surveys, offering a familiar and intuitive visual representation of the environment. Traditionally, stereo imagery enabled precise measurements through photogrammetry. Modern techniques now employ dense image matching, often from UAVs, to generate 3D and elevation models, typically using RGB and near-infrared (NIR) imagery.</p> <p>LiDAR provides accurate height data and is widely used for modelling natural and built environments, including forest canopies and shallow water depths.</p> <p>Multispectral, hyperspectral, and thermal sensors, which operate outside the visible spectrum, are particularly effective for assessing plant health and vegetation analysis.</p> <p>Synthetic Aperture Radar (SAR) captures high-resolution imagery using microwave sensors, functioning effectively regardless of lighting or weather conditions.</p> <p>In practice, multiple data types are often used together - for example, combining aerial photography for visual context with LiDAR for detailed elevation information.</p>
Accuracy and Resolution	<p>Aerial survey - expressed by specifying an absolute root mean square error (RMSE) for the positioning of the survey data relative to ground control.</p> <p>The spatial resolution of aerial photography and multispectral, thermal and hyperspectral imagery is expressed as a ground-sampled distance (GSD).</p> <p>The resolution of a LiDAR survey is expressed as the number of points recorded per square metre on the ground, or points per square meter (ppm2).</p>
Area of Interest	<p>The area of interest (AOI) will influence the choice of data capture platforms.</p> <p>Large project areas are captured more efficiently at higher altitudes and at higher data capture speeds.</p> <p>For example, it could be:</p> <ul style="list-style-type: none"> • Satellite-based sensors • Unmanned aerial system (UAS) • Manned fixed-wing aircraft • Manned helicopters

Type	Description
Project and data capture constraints	If applicable.

The Lead Appointing Party shall follow principles outlined in Earth Observation and Aerial Surveys or equivalent. (RICS, 2021)

3. Coordinate System

3.1 Units

All coordinated model files shall be in metres.

Standard detail drawings, sections and component models may be in metres or millimetres.

Where standard detail drawings, sections and component models are incorporated into coordinated models they shall be scaled to metres.

Dimensions may be displayed in metres or millimetres in accordance with normal practice.

3.2 Coordinate Systems and Projection

All coordinates shall be georeferenced to the IRENET95 / Irish Transverse Mercator (ITM).

Where any local grid is used, data shall be supplied in both IRENET95 / Irish Transverse Mercator (ITM) and local grid coordinates

3.3 Datums

All levels shall be relative to the Tailte Éireann Datum.

4. References

BSI, 2018. *National Annex BS EN ISO19650:2-2018*. London: British Standards.

BSI, 2019. *BSI BS EN ISO 13567-2 - Technical product documentation – Organization and naming of layers for CAD Part 2: Concepts, format and codes used in construction documentation - CORR: January 31, 2019*, s.l.: BSI.

BSI, 2024. *BSI BS EN ISO 22014 - Library objects for architecture, engineering, construction and use*, s.l.: BSI.

MCHW, Feb 2020. *General Principles and Scheme Governance GG 184 Specification for the use of Computer Aided Design*. Revision 0 ed. s.l.:Design Manual for Roads and Bridges.

NBS, 2025. *NBS Uniclass*. [Online]
Available at: <https://www.thenbs.com/our-tools/uniclass>
[Accessed 02 2025].

RICS, 2021. *Earth observation and Aerial Surveys*. London : Royal Institution of Chartered Surveyors (RICS).

Transport Infrastructure Ireland, 2026. *GE-BIM-00101 BIM for Infrastructure Implementation Guidelines for National Roads*, 2026: TII Publications.

Appendix A - Acronyms and Abbreviations

Acronym	Definition
AIR	<p>Asset Information Requirements</p> <p>This defines the information that is required, and the managerial and technical aspects of producing this information, for the operation of an asset to meet the OIR</p>
AOI	<p>Area Of Interest</p>
BEP	<p>BIM Execution Plan</p> <p>Plan that explains how the information management aspects of the Appointment will be carried out by the Delivery Team.</p> <p>NOTE 1: A pre-appointment BIM execution plan focuses on the delivery team's proposed approach to information management and their capability and capacity to manage information.</p> <p>NOTE 2: Specific terminology can be applied to contracts, for example the equivalent term for 'BIM execution plan' under NEC 4 terminology is the 'Information Execution Plan'.</p>
BIM	<p>Building Information Modelling</p> <p>Use of a shared digital representation of a built asset to facilitate design, construction and operation processes to form a reliable basis for decisions.</p>
CAD	<p>Computer Aided Design</p>
CDE	<p>Common Data Environment</p> <p>A workflow to control the single source of information for any given project or asset. Used to manage the collection and dissemination of all relevant approved project/ asset information. Used in combination with a digital storage solution, information is shared collaboratively in a logical and accessible way to help all key parties readily gain access to information, use consistent naming conventions, avoid duplication and retain ownership.</p>
CWMF	<p>Capital Works Management Framework</p> <p>Is a structure that has been developed to deliver the Republic of Ireland Government's objectives in relation to public sector construction procurement reform. It consists of a suite of best practice guidance, standard contracts and generic template documents that form the four pillars that support the Framework</p>
DBP	<p>Digital Build Project</p> <p>Project led by Technological University Dublin (TU Dublin) to unite all construction and built environment stakeholders to drive integrated, interoperable digital data adoption across the industry to innovatively improve efficiency, productivity, and international competitiveness on a sustainable basis in Ireland.</p>
GCCC	<p>Government Contracts Committee for Construction</p>
IM	<p>Information Management</p> <p>The same definition as BIM.</p> <p>Note: in the context of this document, BIM and IM represent the same meaning.</p>
IMI	<p>Information Management Initiative</p> <p>Led by the Construction Leadership Council (CLC) the initiative aspires to become an industry-led and government-supported programme to progressively transform information management practices across the built and natural environment sector.</p>


Acronym	Definition
ITM	Irish Transverse Mercator
LiDAR	Light Detection and Ranging
NIR	Near-Infrared
OGP	Office of Government Procurement Plays a leading role in public procurement reform as part of the Department of Public Expenditure, Infrastructure, Public Service Reform and Digitalisation.
OIR	Organisational Information Requirements This specifies what information is required to achieve an organisations strategic objectives in relation to business operation, asset management, portfolio planning etc. The OIR may be developed from an ISO 55001 asset management system
PIR	Project Information Requirements This specifies the information that is required related to a specific project, consisting of the relevant information from the OIRs and AIRs.
PPM2	Points Per Square Meter
RMSE	Root Mean Square Error
SAR	Synthetic Aperture Radar
TII	Transport Infrastructure Ireland Is a state agency in Ireland, dealing with road and public transport infrastructure.
UAS	Unmanned Aerial System
UID	Unique identification

Appendix B - Presentation Codes

Source: ISO 13567-2 Section 6.3

Code	Description
M	Model
E	Element graphics
A	Annotation
T	Text
H	Hatching
D	Dimension
J	Section/detail marks
K	Revision marks
G	Grid
Y	Graphic
Z	Dimension
U	User
R	Red lines
C	Construction lines
P	Page/paper
B	Border
F	Border lines (frame)
O	Other graphics
V	Text
W	Title
N	Notes
I	Tabular information
L	Legends
S	Schedules
Q	Tables (query)



 Ionad Ghnó Gheata na Páirce,
Stráid Gheata na Páirce,
Baile Átha Cliath 8, D08 DK10, Éire

 www.tii.ie

 +353 (01) 646 3600

 Parkgate Business Centre,
Parkgate Street,
Dublin 8, D08 DK10, Ireland

 info@tii.ie

 +353 (01) 646 3601